

Infrared night vision Surveillance camera

HY-518 Quick User Guide



Guidelines for Safe and Efficient Use

- Do not expose your product to liquid or moisture or humidity.
- Do not use or store your product in humid or corrosive location or extreme high or low temperatures. Uses your product under recommended operation temperatures.
- Do not attempt to take out SD card while it is recording. Failure to do so might entail a risk of SD card or files damage .
- Do not attempt to disassemble or modify your product. Only manufacturer authorized personnel should perform service.
- Recommends use of manufacturer original accessories for safe. Use of third-party accessories may pose a risk to safe or product malfunction.
- Please follow local traffic laws and regulations for the use of your product. Always pay full attention to driving and pull off the road and park before connecting or operating your product.

FEATURES

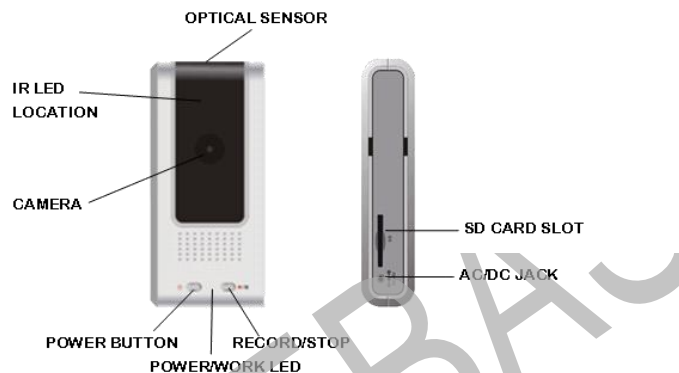
- Portable "stand-alone" video-based surveillance camera.
- Camera easily mounts in almost any vehicle and any place.
- Easily record the intruders or driving condition in front of you.
- Auto night vision under low light circumstance.
- Capture video for legal and/or insurance purposes.
- High resolution color images up to 1280x1024
- Three selectable resolution: 1.3M, VGA, QVGA
- Flexible time-lapse mode from 1 sec. up to 3 min. (max.).
- Two power options: AC/DC 5V adaptor, Car DC 12V power cord (optional)
- Uses SD/SDHC memory card up to 8GB (not included)

ACCESSORIES



Camera Power link Fix stand CD ROM

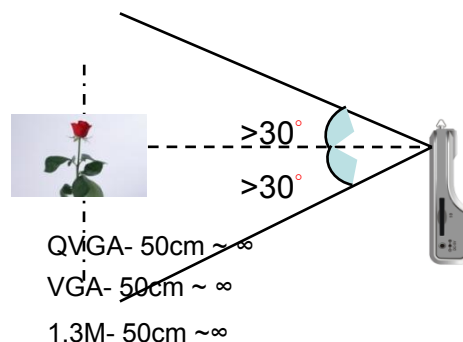
PRODUCT DESCRIPTION



USING DIAGRAM OF FIXTURE STAND



RECORD ANGLE AND FOCUSING DISTANCE



INSTALLATION AVI PLAYER

- Install provided AVI play CD in your computer
- Please select "EasyRECORDPlaySetup.exe" to do the setup.
- Please choose "No-question-asked installation"
- Please press "Yes, I do", installation will be processed and finished.

SAVE CAMERA SETTINGS

- Insert SD card in your PC and choose "FAT32" to format.
- Open installed AVI play application, choose "Options" -> "Camera Settings".
- Choose record resolution 1280x1024, 640x480, 320x240.
- Choose voltage frequency 50Hz or 60Hz in the country, it will minimize the flickers on images under indoor lighting. Please visits <http://kropla.com/electric2.htm> for worldwide frequency list
- Select Time-lapse mode by second up to 3 minutes (max.).
- Select SD card drive location in your computer
- Select "Looping" to repeat continuously recording when memory is full. If "Looping" is not selected, it will stop recording when memory is full.
- Choose "System Time" to save in SD card as time & date recorded.
- Click "OK" to save the camera settings in SD card.

START TO USE & RECORDING

- Insert saved camera settings SD card to your camera.
- Connect the provided AC/DC 5V adaptor or Car DC 12V power cord .
- Press "Power On/Off" button to start the camera, the Green LED light is ON for 1 second and will turn OFF automatically. After 2 seconds, the Green LED light will be ON again with 2 short beeps, .
- Press "Record/Stop" button to start recording. After 1 second, The "Power/Work LED" flickers, indicating that it is recording. Press "Record/Stop" button again to stop recording.

Note: The frequent of flickers is subjected to your Time-lapse mode selection. E.g. If time-lapse is 30 seconds, it will flicker once per 30 seconds.

VIEWING ON A COMPUTER

- Power off your camera.
- Take out the SD card from camera and insert in your computer SD card reader. If your computer does not come with a built in SD card reader, you can purchase one at local electronics store.

PLAYBACK RECORDED FILES

- Open installed AVI application. Select "File" -> "Open", select file to play.

ADD GROUP FILES TO PLAY LIST

- Click "My Computer", select SD card drive location. Open "DCIM" -> "100rumb1". Select top menu "Edit" -> "Select all" Uses "Drag & Drop" function to load selected files on to desktop AVI Play icon. Selected files will be loaded to play list and play automatically.

ENLARGE/REDUCE IMAGE

- Move cursor onto video screen and "click" to enlarge or reduce image.

The default setting is 0.5 time ,Screen will be switched by following cycle: **0.5 time**→**1 time**→**2 time**→**0.25 time**→**0.5 time**

EXTRACT & SAVING IMAGE TO JPEG

- Click to pause playback. Click / to search forward/backward to desired image.
- Click "File" -> "Save Current" -> "Save"

ADJUST PLAYBACK SPEED

- Use cursor onto speed bar to adjust the playback speed from 1fps up to 30fps.

MOTION SEARCH

- Click to pause playback. Go to "Motion Search" on right side.
- Click to search forward or to search backward.

AVI Player provides one useful function of "Motion Search". During long term recording on same target or environment, like for security purpose, the photo taking area may hasn't any change at all for certain period, unless other different object showing.

"Motion Search" function can search and reach effectively and speedily. from played video to the specific photo which is detected by the "Motion Search" and stop if target area shows difference.

- Tip:** "Threshold" is setting the level of variation for, default is "50". The smaller value indicates "Motion Search" to compare the much details of variation. On the contrary, bigger value compares fewer details. Reminding to press "Pause" first if "Threshold" value has to be reset.

Identification of Light and Beep

Green light: Battery and operation status.
Green light.....flashing interval repeatedly, under recording.

Red light: memory card abnormal or low storage capacity or low battery.

Red light.....flashes 3 times, power off after 1sec. Indicates memory card abnormal or low storage capacity.

Red light.....flashes 1time then power off , means low battery

Buzzer:

Buzzer..... 1 short beeps, system start recording.

Buzzer..... 1 short beeps, system power off.

CAMERA SETTINGS

System Requirements

- PC with built-in SD card reader, or USB port to external card reader
- Windows 2000 / XP / Vista
- CD-ROM drive

Format SD card

Insert SD/SDHC card in your computer card reader, select **FAT32 32KB** to format the SD card.

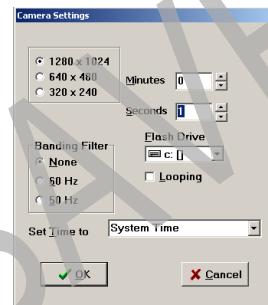
Note: You are recommended to use the following brands or other major brand SD/SDHC card, **Adata / Apacer / Kingston / SanDisk / Silicon power / Transcend / TEKQ.....**etc Please use Class 6 with over 66 x speed SD card

Start Camera Settings

For the first time use of camera device, you need to save camera settings in a formatted SD card and then download the camera settings to camera device.

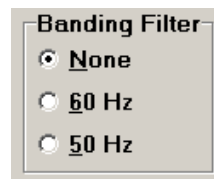
Open installed **AVI Play** application to start saving camera settings **Options -> Camera Settings ->** complete the following selection:

1. Resolution setting



1280 x 1024 → 1.3M resolution camera
640 x 480 → VGA resolution camera
320 x 240 → QVGA resolution camera

2. Voltage frequency setting



None → Apply to electronic fluorescent lamp without area limitless.

60 Hz → Apply to Taiwan, Japan , America area.

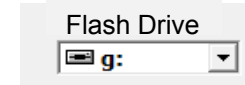
50 Hz → Apply to for China , Japan , Europe area

3. Time-lapse mode

Select time interval from 1 sec. to 3 min. for time-lapse recording.



4. SD card location



5. Looping

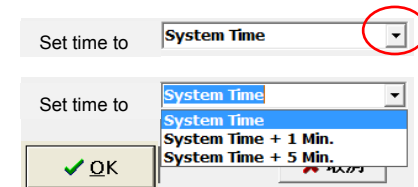
If selected, permits to overwrite old data when SD card memory is full.

If unselected, stops recording when SD card memory is full



6. Time and date setting

Set PC system time as time & date recorded on video.



■ **System Time** → As time & date recorded → **Recommend**

■ **System Time + 1 min.** → As time & date recorded

■ **System Time + 5 min.** → As time & date recorded

7. Save Camera Settings

Click "OK" to save all settings in SD card. Take out SD card and insert to camera device and power on. All settings will load into camera device.

Camera settings is completed.

8. Camera Reset

Do not take out SD card when camera is power on or recording. Failure to do so might cause SD card damage or camera hanged. If it is happened accidentally, simply take out SD card and disconnect power supply for 10 sec., then connect power supply again without SD card inside, press power on , the red LED will flash 3 times with 3 "Bi" sound, camera reset is completed. Insert SD card to camera and start recording.

The recording time of memory card will be different because of the complexity of recorded objects. Below data just for your reference .

1.3M pixels resolution reference data(Under light):

1.3M-SD card recording time (70KB/Frame)				
Time setting	1G SD card	2G SD card	4G SDHC	8G SDHC
1 Sec.	4H	8H	16H	1.3D
3 Sec.	12H	1 D	2D	4D
5 Sec.	20H	1.6D	3.2D	6.4D
10 Sec.	1.6D	3.2D	6.4D	12.8D
30 Sec.	5D	9.5D	19D	38D
1 Min.	9D	19D	38D	76D
2 Min.	18D	38D	76D	152D
3 Min.	27D	57D	114D	228D

1.3M pixels resolution reference data(Non light):

1.3M-SD card recording time (80KB/Frame)				
Time setting	1G SD card	2G SD card	4G SDHC	8G SDHC
1 Sec.	3 H	6 H	12 H	1 D
3 Sec.	9 H	18 H	1.5 D	3 D
5 Sec.	15 H	1.25 D	2.5 D	5 D
10 Sec.	1.3 D	2.5 D	5 D	10 D
30 Sec.	3.8 D	7.5 D	15 D	30 D
1 Min.	7.5 D	15 D	30 D	60 D
2 Min.	15 D	30 D	60 D	120 D
3 Min.	30 D	45 D	90 D	180 D

300K pixels resolution reference data(Under light):

VGA-SD card recording time(30KB/Frame)				
Time setting	1G SD card	2G SD card	4G SDHC	8G SDHC
1 Sec.	9H	18H	1.5D	3D
3 Sec.	1. 1D	2.2D	4.4D	8.8D
5 Sec.	1.8D	3.6D	7.2D	15D
10 Sec.	3.6D	7.2D	14.4D	29D
30 Sec.	7.2D	14.4D	29D	58D
1 Min.	14.4D	29D	58D	116D
2 Min.	29D	58D	116D	232D
3 Min.	42D	87D	174D	348D

300K pixels resolution reference data(Non light):

VGA-SD card recording time(20KB/Frame)				
Time setting	1G SD card	2G SD card	4G SDHC	8G SDHC
1 Sec.	14H	1.2D	2.4D	4.8D
3 Sec.	1. 8D	3.6D	7.2D	14.4D
5 Sec.	2.8D	5.6D	11.2D	22D
10 Sec.	5.6D	11.2D	22D	44D
30 Sec.	16D	33D	64D	128D
1 Min.	32D	64D	128D	256D
2 Min.	64D	128D	256D	384D
3 Min.	96D	192D	384D	640D

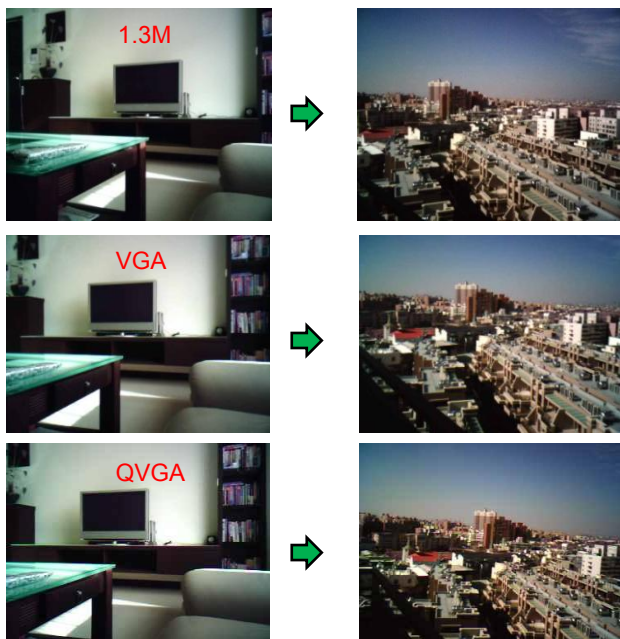
76K pixels resolution reference data(Under light):

QVGA-SD card recording time (10KB/Frame)				
Time setting	1G SD card	2G SD card	4G SDHC	8G SDHC
1 Sec.	1. 1D	2.2D	4.4D	9D
3 Sec.	3.3D	6.6D	13.2D	27D
5 Sec.	5.5D	11D	22D	44D
10 Sec.	11D	22D	44D	88D
30 Sec.	33D	66D	120D	240D
1 Min.	60D	120D	240D	480D
2 Min.	120D	240D	480D	960D
3 Min.	180D	360D	720D	1,440D

76K pixels resolution reference data(Non light):

QVGA-SD card recording time (10KB/Frame)				
Time setting	1G SD card	2G SD card	4G SDHC	8G SDHC
1 Sec.	1. 1D	2.2D	4.4D	9D
3 Sec.	3.3D	6.6D	13.2D	27D
5 Sec.	5.5D	11D	22D	44D
10 Sec.	11D	22D	44D	88D
30 Sec.	33D	66D	120D	240D
1 Min.	60D	120D	240D	480D
2 Min.	120D	240D	480D	960D
3 Min.	180D	360D	720D	1,440D

HY-518 different resolution setting image:



HY-518 night view image:(1.3M resolution)



Tips of application :

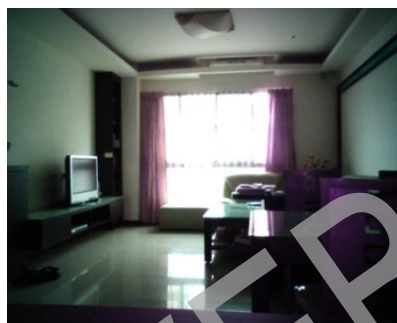
- Please ensure camera lens is clean before recording. Uses anti-static cotton cloth to clean lens for best image quality.
- Please avoid directly facing your camera lens to strong sunlight or backlight, it will cause glistening effect on video.
- Use tripod to fix your camera for "time-lapse photography recording", it can get clear and high quality of video effect.
- Uses your camera to record your daily activities in AVI format. The longer of time interval is selected, the smaller file size of your daily story is. You can easily email the video files to your family or friends to share your wonderful stories with them.

HY-518 & Other Camera image comparison



HY-518 (Day mode)

HY-518 (Night mode)



1.3M resolution
Day time
Without light



1.3M resolution
Night time
without light



1.3M resolution
Night time
with light

Specification:

Model name	HY-518
Sensor	1.3M pixels CMOS image sensor
Sensitivity	0.9V/Lux-sec.
Time interval	By Sec. ,Min. ,Max.3min.
Resolution	1280*1024,640x480,320x240 pixel
Focusing	Fix. 0.5M~infinity
Exposure	Auto
White balance	Auto
IR LED	850nm
Effective distance	6M
Movie image	AVI format (Motion JPEG)
Still image	JPG format
Storage	SD Card, Max. to SDHC 8GB
DC power	DC 5V 500mA
Work temperature	Room temperature
Use environment	Day and night
Operation temp.	35 °C to 0 °C
Storage temp.	65 °C to 0 °C
Dimension	11.6x57x26mm (L x W x T)
Computer OS	WIN2000/XP/Vista

Standard accessories:

- 1. Camera Device 1pcs
- 2. Installation CD 1pcs
- 3. Quick guide manual 1pcs
- 4. Fix stand 1pcs
- 5. Mains adapter 1pcs
- 6. Wall mount adjustable bracket 1pcs

Optional accessories:

- 1. 5V DC car cigar adapter
- 2. Windshield mount holder for Car use
- 3. SD card (Max. 8G)